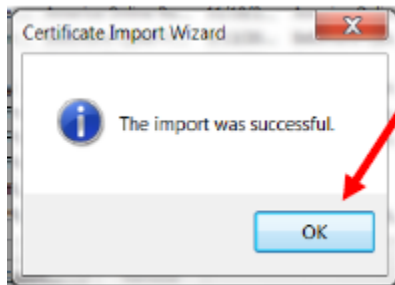


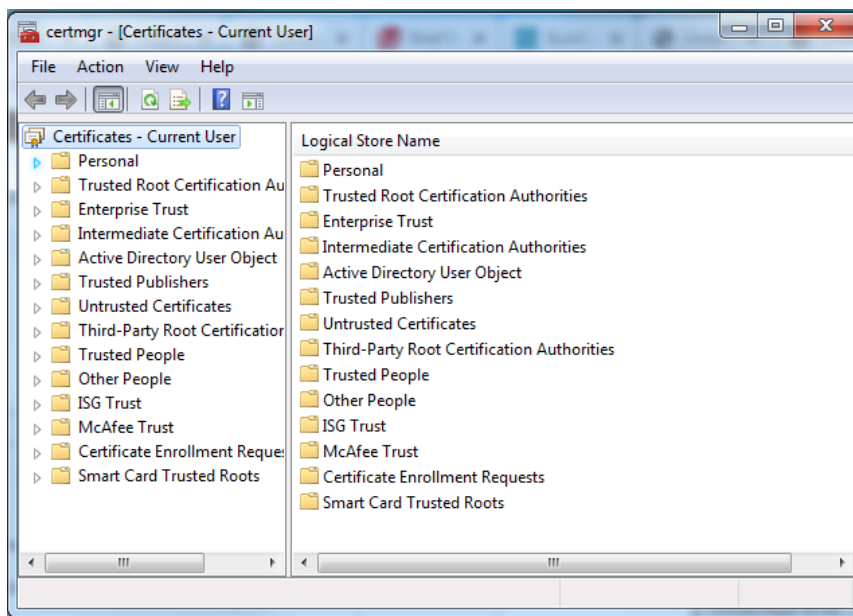
Alternate Slate Certificate Installation for Chrome and IE browsers

If the slate certificate does not install properly and you don't get the message "The import was successful", shown below, then you can install the certificate as outlined in the steps below. The Slate certificate might look like it is installed and can be seen in the "Trusted Root Certification Authorities" folder. If this is the case remove it before starting the alternative install instructions below.



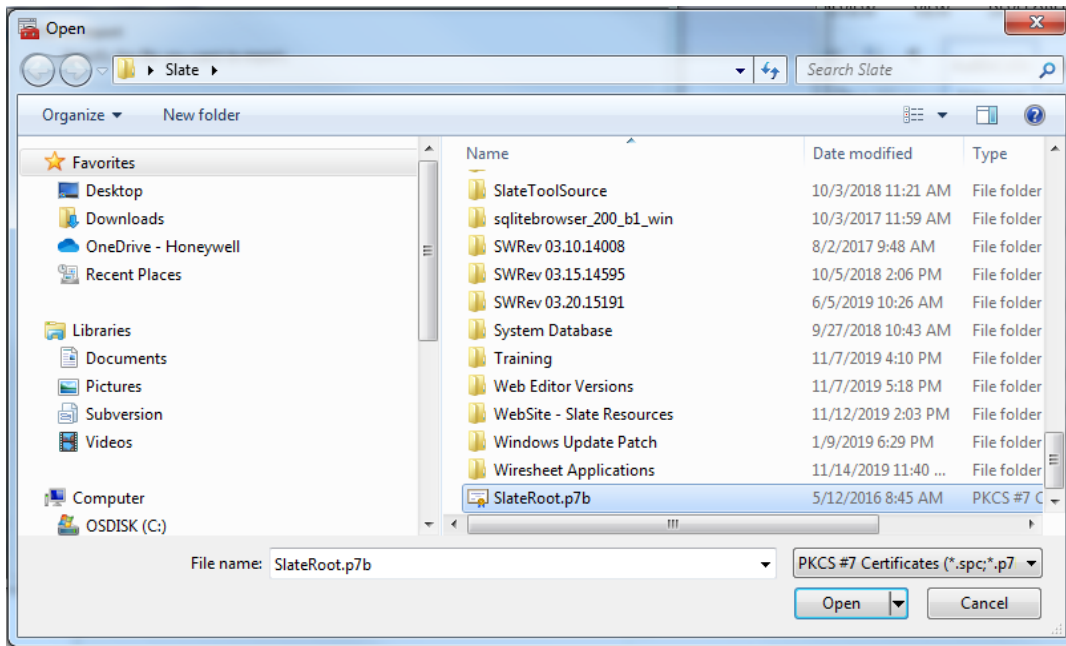
1. Open the Certificate Manager

- In the windows "Search" box, type "certmgr.msc" (no quotes).
- The certificate manager will open.

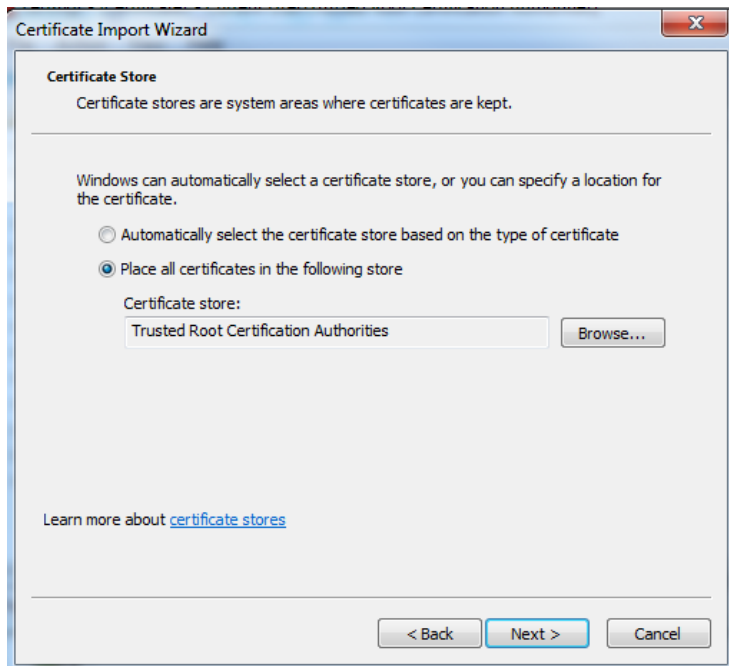


2. Select and Right click on "Trusted Root Certification Authorities" from the folder list on the left.
3. In the pop-up menu, choose "All Tasks" >> "Import".
4. Click the "Next" button
5. Click the "Browse" button

- Browse to the location where the Slate certificate is saved. In the file type dropdown box change the selection to PKCS #7 Certificates (*.spc; *p7), select the SlateRoot.p7b then click the "Open" button

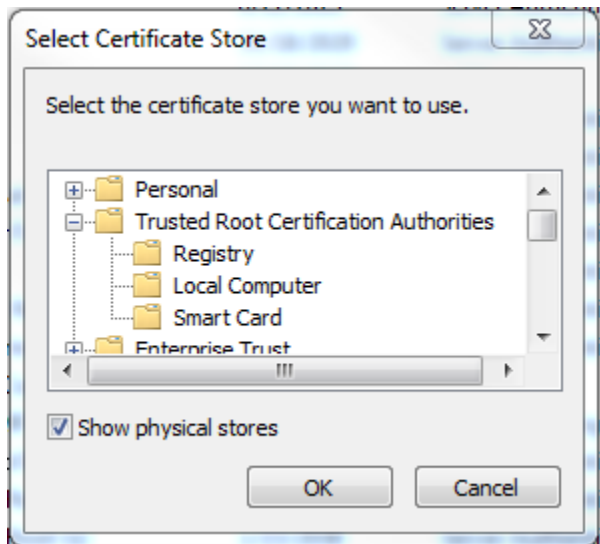


- Click the "Next" button
- Select "Place all certificates in the following store"



- Click the "Browse" button

10. Put a checkmark beside "Show physical stores". Expand the "Trusted Root Certification Authorities" folder, select "Local Computer" then the "OK" button.



11. Click the "Next" button
12. Click the "Finish" button

