

Honeywell Cloud Link 4 G Modem

Quick Start Guide

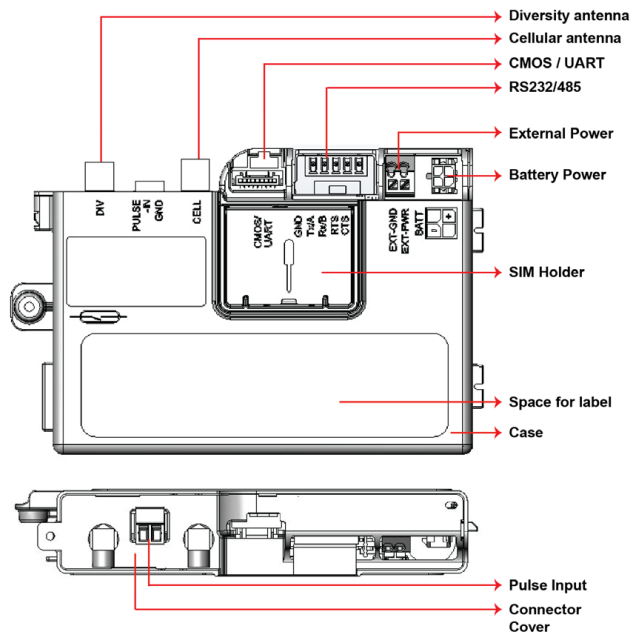


We thank you for being a part of the Honeywell Thermal IQ experience. With Thermal IQ, you can access the right information at the right time and get ahead of problems to minimize downtime and maximizing uptime. Honeywell's Thermal IQ is part of the larger Honeywell Connected Plant offering.

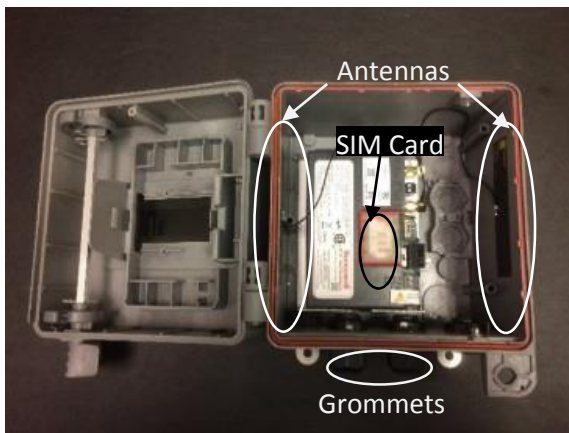
Developed by the thermal process experts at Honeywell, Thermal IQ is a remote monitoring solution that securely connects your combustion equipment to the cloud, making critical thermal process data available anytime, anywhere on any smart device.

This Quick Start Guide will guide you the process of installing your Cloud Link modem.

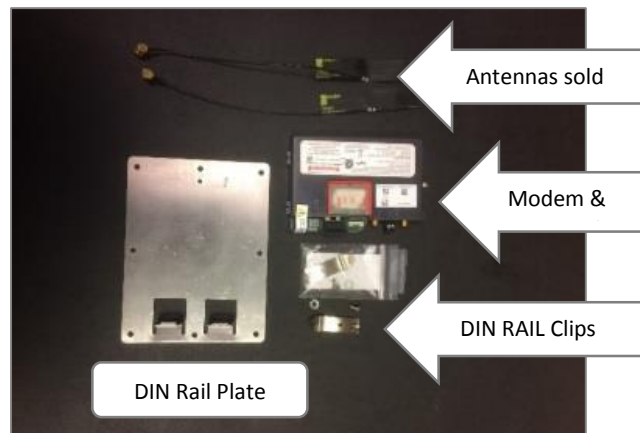
Cloud Link Modem



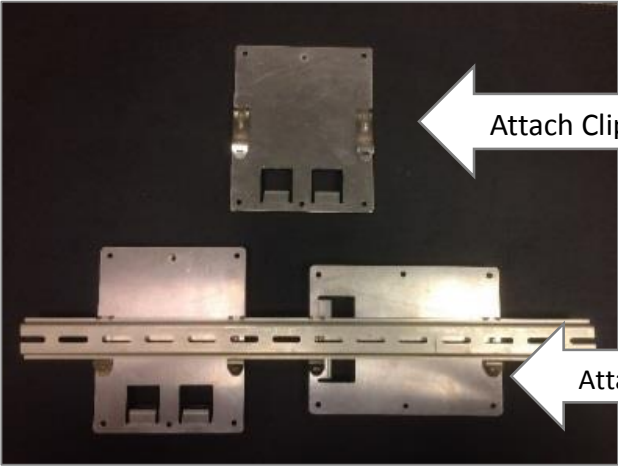
Composite Case Kit includes:
Modem, Antennas, SIM Card, Grommets



DIN Rail Kit includes:
Modem, SIM Card, DIN Rail Plate & Clips



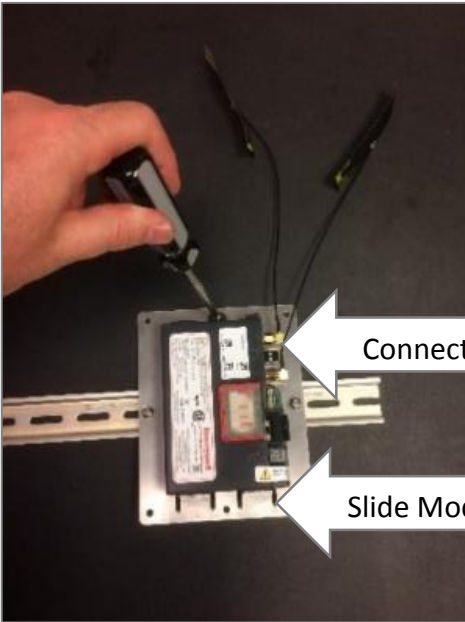
Installing the DIN Rail Mount Kit



Attach Clips to back of Plate 1

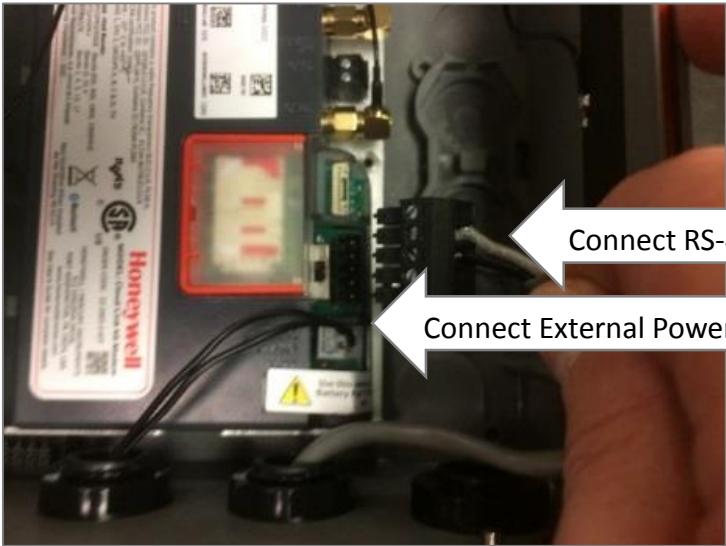
Attach Clips to DIN Rail 2

Clips mount in either orientation



Connect Antennas 3

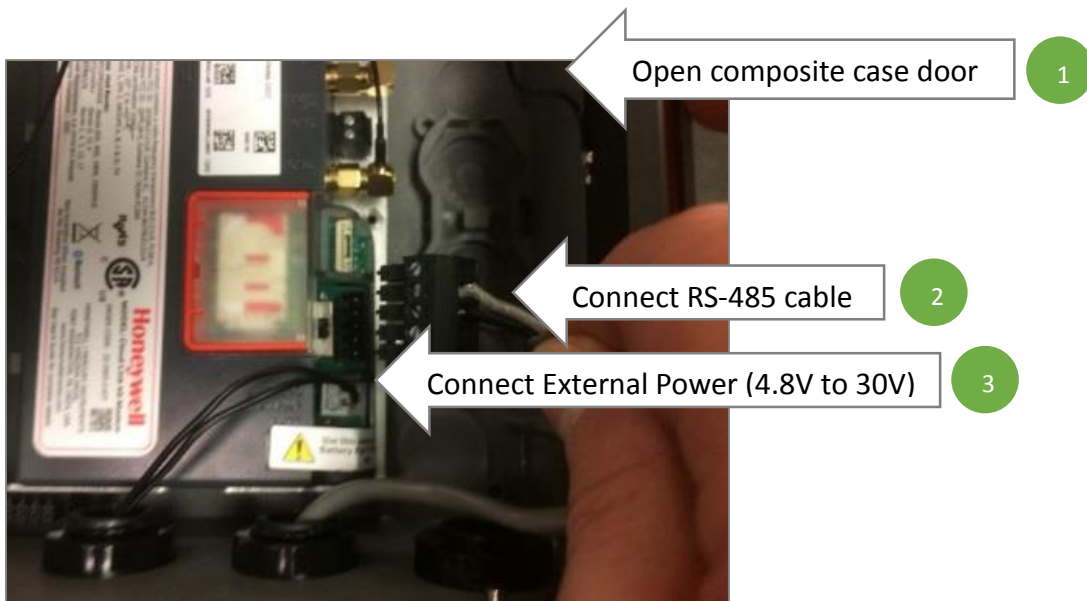
Slide Modem into tabs & secure screw 4



Connect RS-485 cable 5

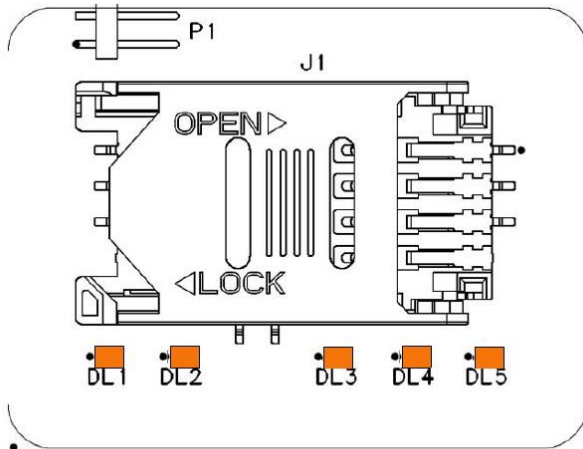
Connect External Power (4.8V to 30V) 6

Installing the Composite Case Kit

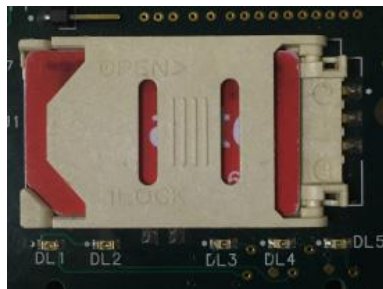


Use mounting slots on top & bottom of composite case

SIM Card & LED Indicators



LED Locations



LED 1

Call established	High Speed LED blink (8 blinks per second)
Call establishment in progress	Medium speed LED blink (2 blinks per second)
Call establishment fail	Low speed LED blink (1 blink per second)
No Network connection	LED off

LED 2

RSSI excellent	5 blinks per second
RSSI good	2 blinks per second
RSSI fair	1 blink every second
RSSI poor	1 blink every 2 seconds
No signal	1 blink every 5 seconds
no RSSI	LED OFF

LED 3 LED 4 LED 5

LED ON
LED OFF

LED 3	LED 4	LED 5	
Number of blinks			
All LEDs blink at once			Separator
1 blink	1 blink	1 blink	Low Super Capacitor voltage
1 blink	1 blink	2 blinks	External OTA Firmware upgrade flash memory Fault
1 blink	1 blink	3 blinks	BLE UART communication fail
1 blink	2 blinks	1 blink	BLE MAC address not configured
1 blink	2 blinks	2 blinks	Modem UART communication fail
1 blink	2 blinks	3 blinks	Config data checksum error
1 blink	3 blinks	1 blink	IP Address or port # not configured
1 blink	3 blinks	2 blinks	Security Certificate Error
1 blink	3 blinks	3 blinks	Low Battery Capacity Indication
2 blinks	2 blinks	1 blink	External Data flash memory Fault
2 blinks	2 blinks	2 blinks	Network comm fail
2 blinks	2 blinks	3 blinks	SIM Card Error
All LEDs blink three times			MiCell Microcontroller power cycle occurred
All LEDs blink two times			MiCell Microcontroller Watchdog timeout occurred

For more information

The Honeywell Thermal Solutions family of products includes Honeywell Combustion Safety, Honeywell Combustion Service, Eclipse, Exothermics, Hauck, Kromschroder and Maxon. To learn about our products visit ThermalSolutions.honeywell.com or contact your Honeywell Sales Engineer

Honeywell Process Solutions

Honeywell Thermal Solutions (HTS)
1250 West Sam Houston Parkway South
Houston, TX 77042

Visit Combustion.Honeywell.com/Thermal-IQ