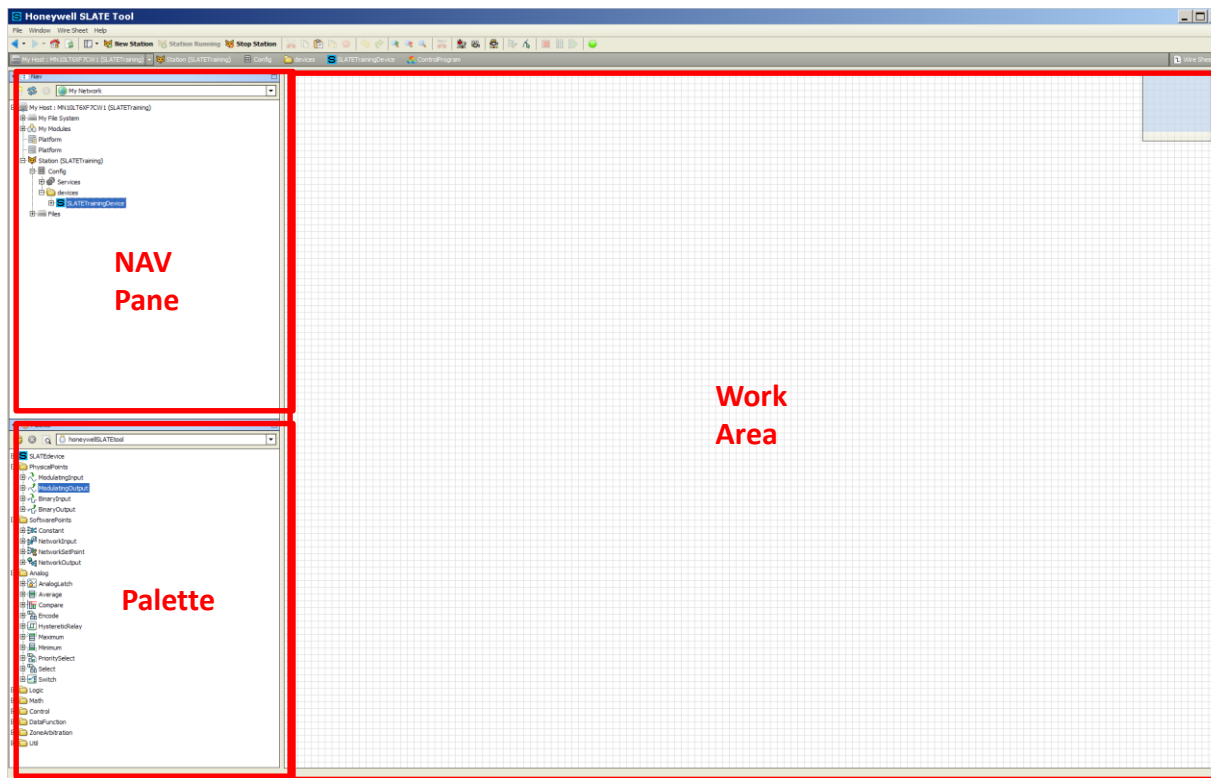


Downloading Macros and Applications from the SLATE web site.

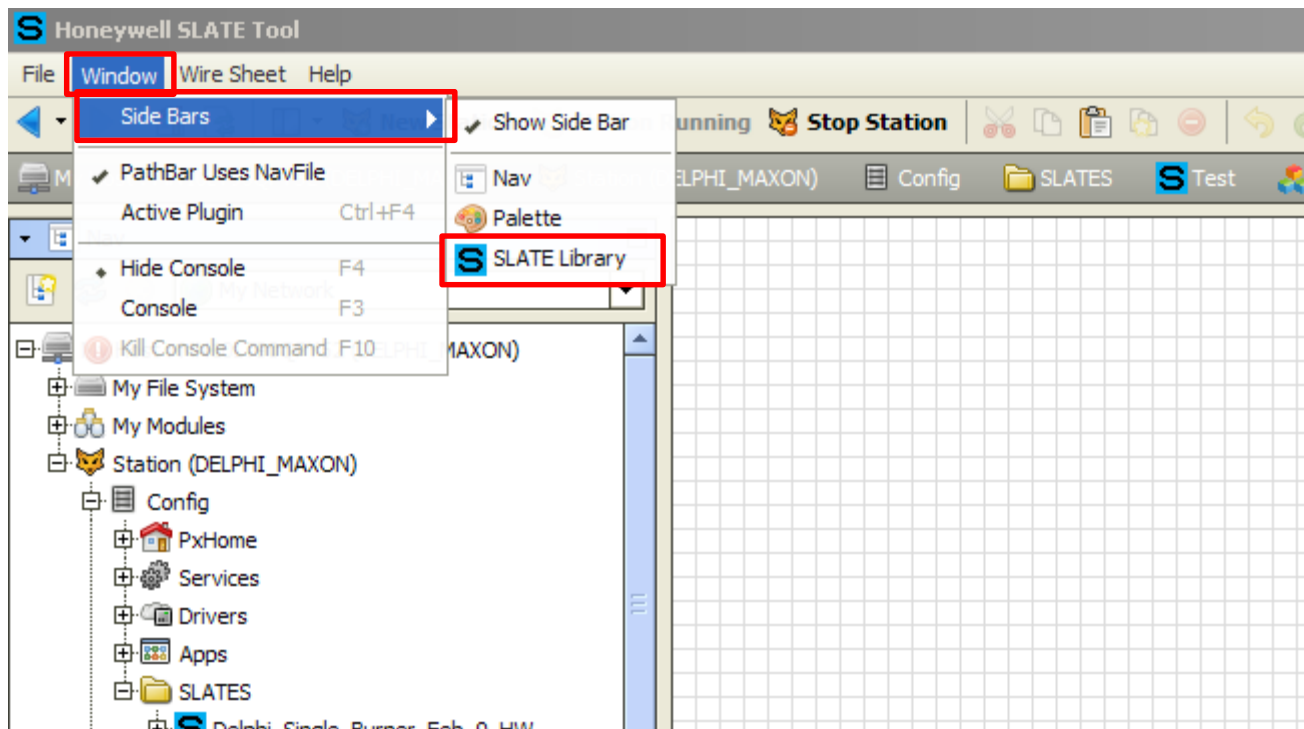
1. Open up your browser and go to www.combustion.honeywell.com/SLATE.
2. Click the “SIGN IN” link at the top right of the page.
3. Type in your USERNAME and PASSWORD. Login is required to access the SLATE Resources section of the page where the Macros and Applications are found.
 USERNAME: slatecustomer
 PASSWORD: combustion1
4. Click the SLATE link located under the SLATE photograph.
5. Click the RESOURCES link at the top of the page.
6. Scroll down to the “Canned Programs” section of the page and click on “download SLATE Canned Programs”.
7. Select the items of interest and download to your PC or external drive.

8. Open Niagara from the SLATE Tools Utility.

9. When Niagara AX is initially opened, the SLATE Library pane is unopened and can not be seen. The Menu bar is visible as is the Navigation Pane, the Palette, and the Work space.

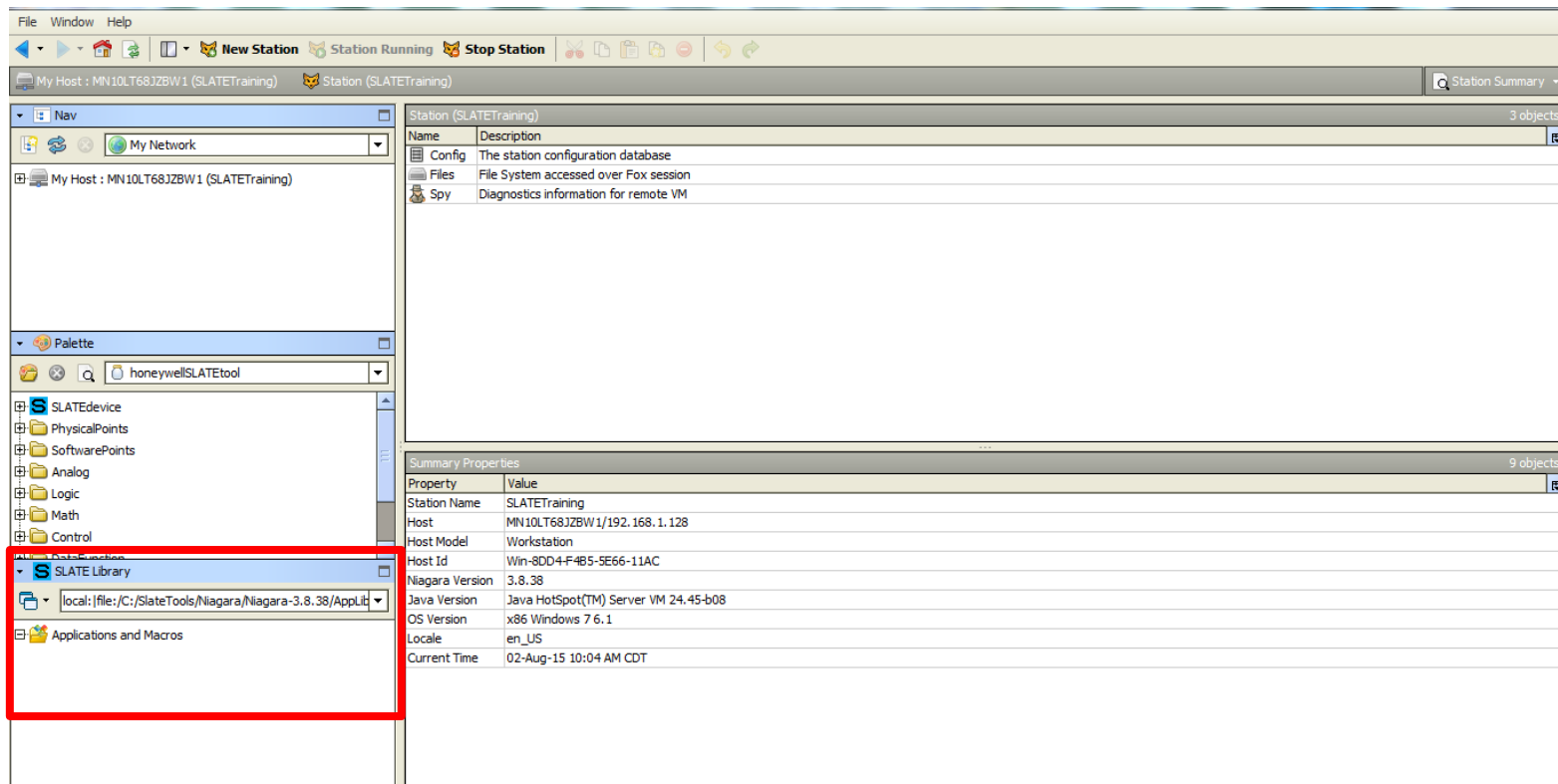


To open the Library view click on Window/Side Bars/SLATE Library.
Select “SLATE Library” from the menu.



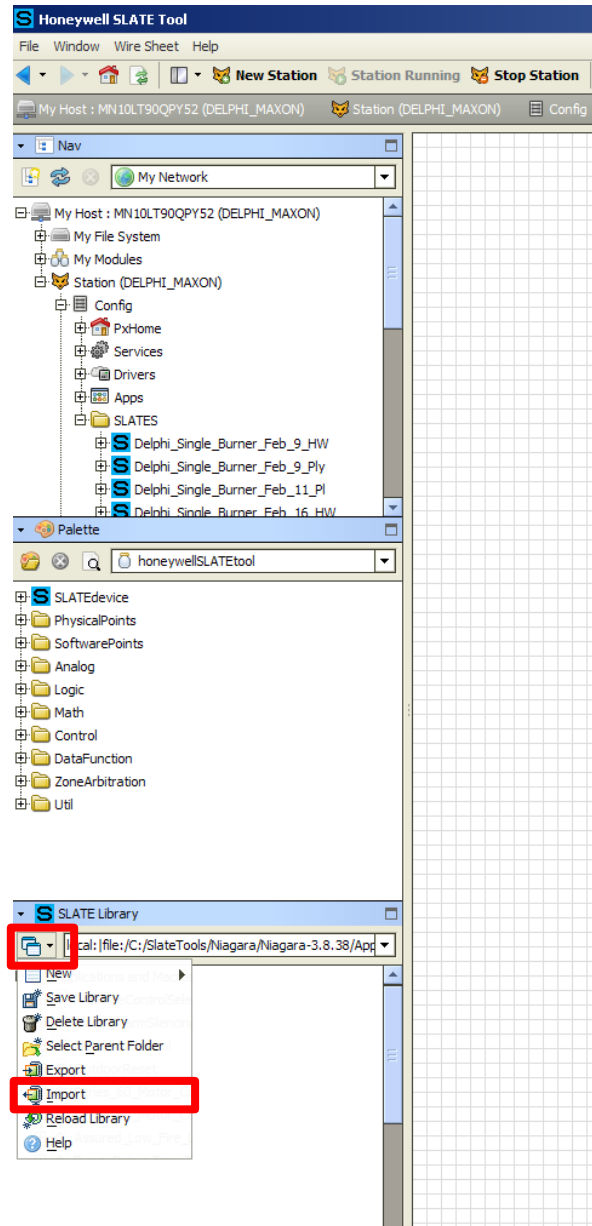
The SLATE Library is now shown on the side bar. Whenever Macros or Applications are saved, they will be available in the SLATE Library for use! Macros and Applications are treated as normal function blocks. They are dragged and dropped onto the wire sheet.

For the time being, notice the SLATE Library is empty.



10. Click on the Options folders in the SLATE Library.

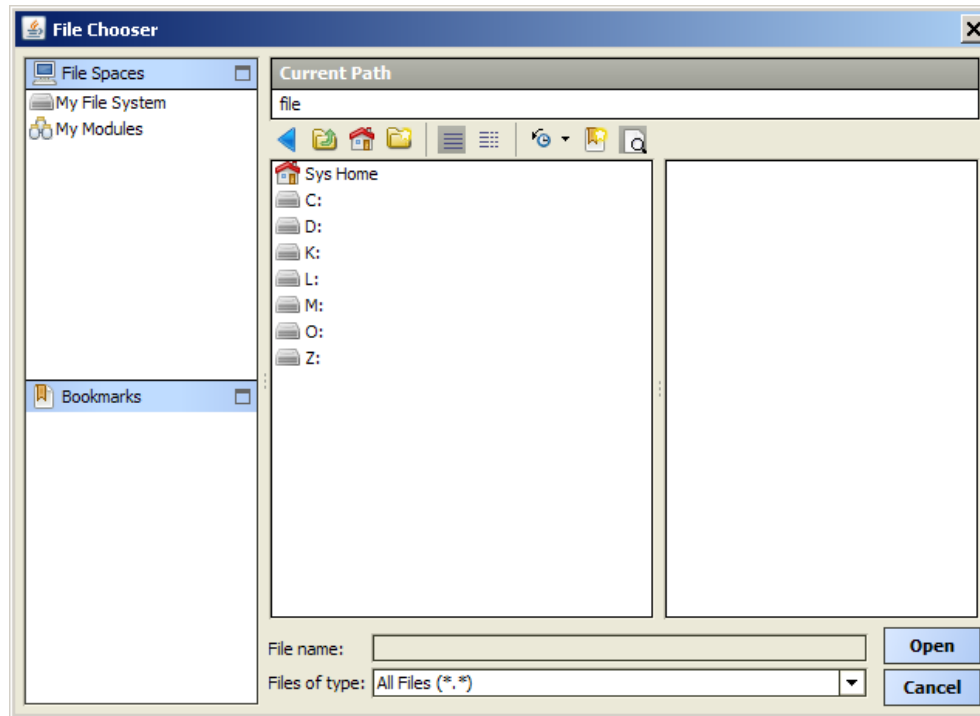
11. Click on “Import”.



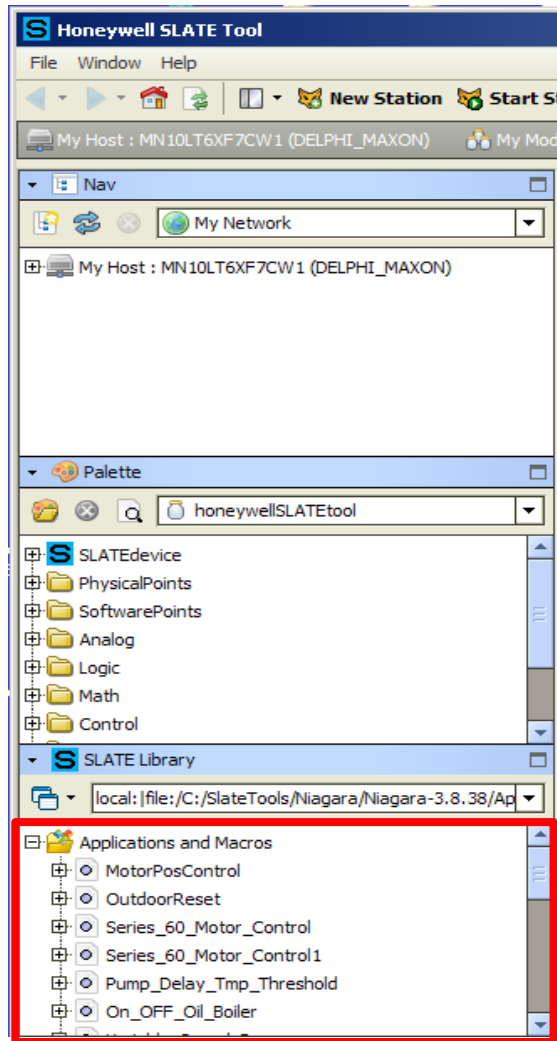
12. In the File Chooser window select the drive where the downloaded Macros and Applications were saved.

Note: if you saved the Macros and Applications to your desktop, select c:/users/Desktop/(imported files).

13. Click “Open” and acknowledge the successful import.



Once you are finished importing the Applications and Macros of interest, they will appear in the SLATE Library. They are ready to use in the wire sheet.



You can close the library view by clicking on the arrow next to SLATE Library then by clicking on “Close”.

